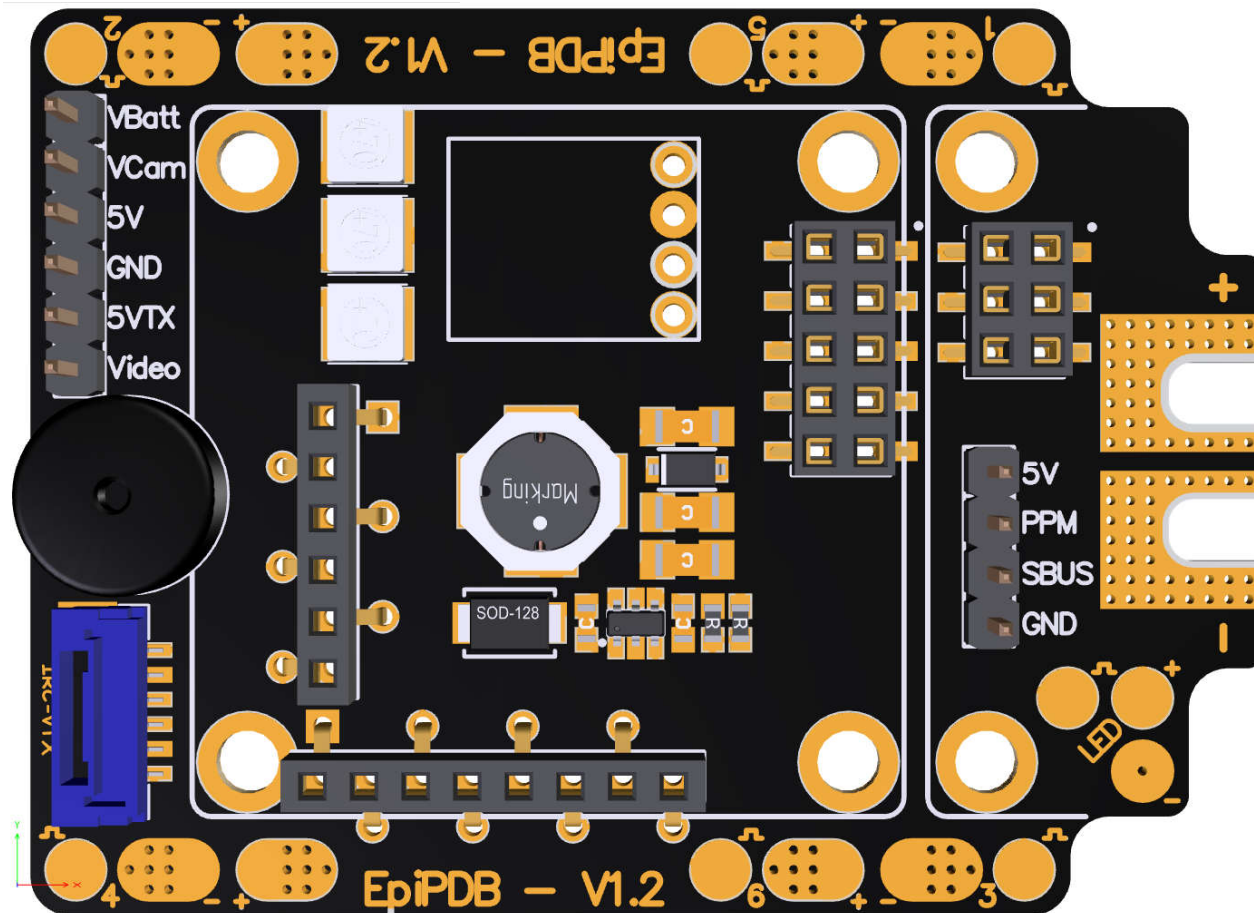
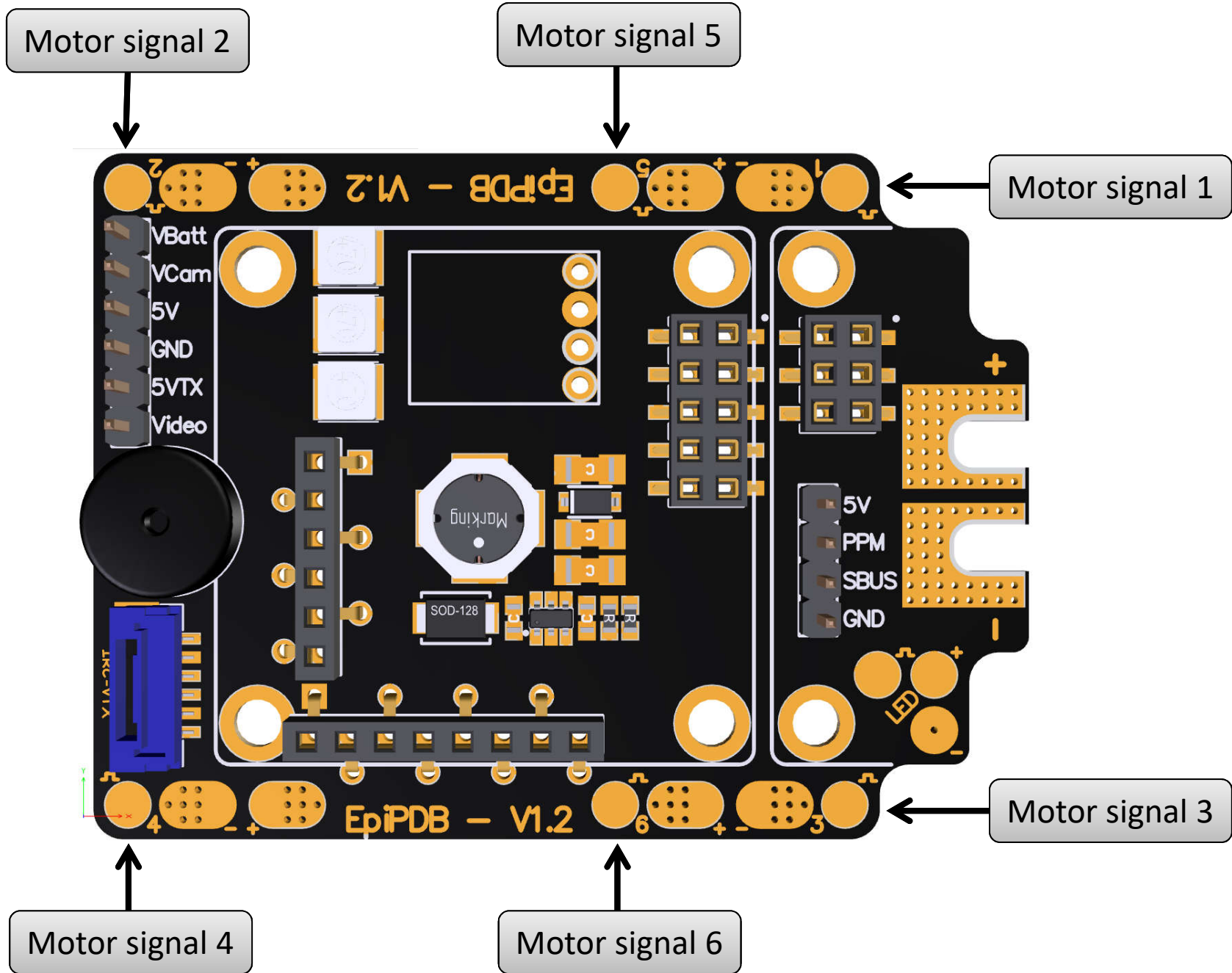


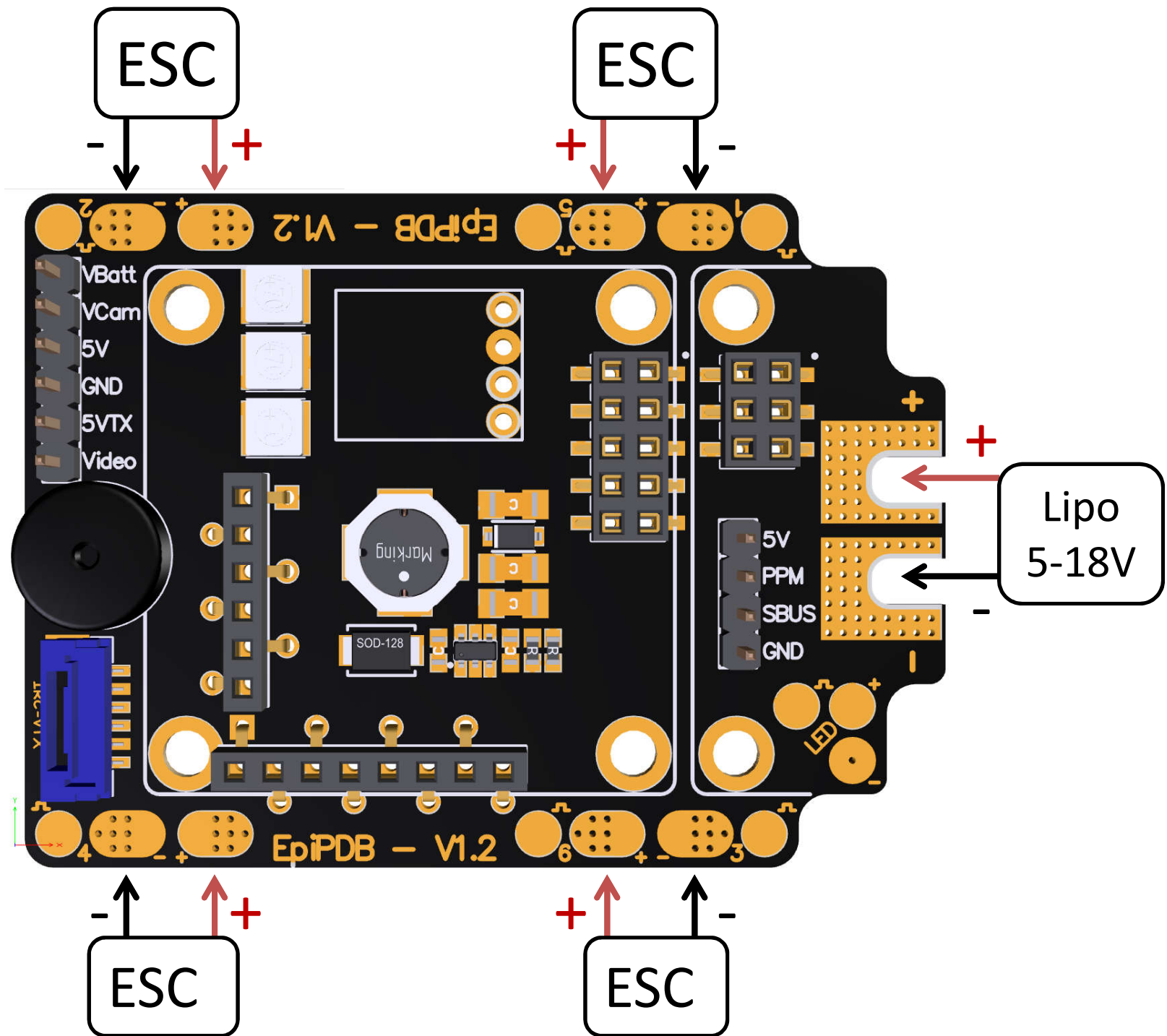
Manual

Epiquad PDB



*Connector layout for Naze Rev6



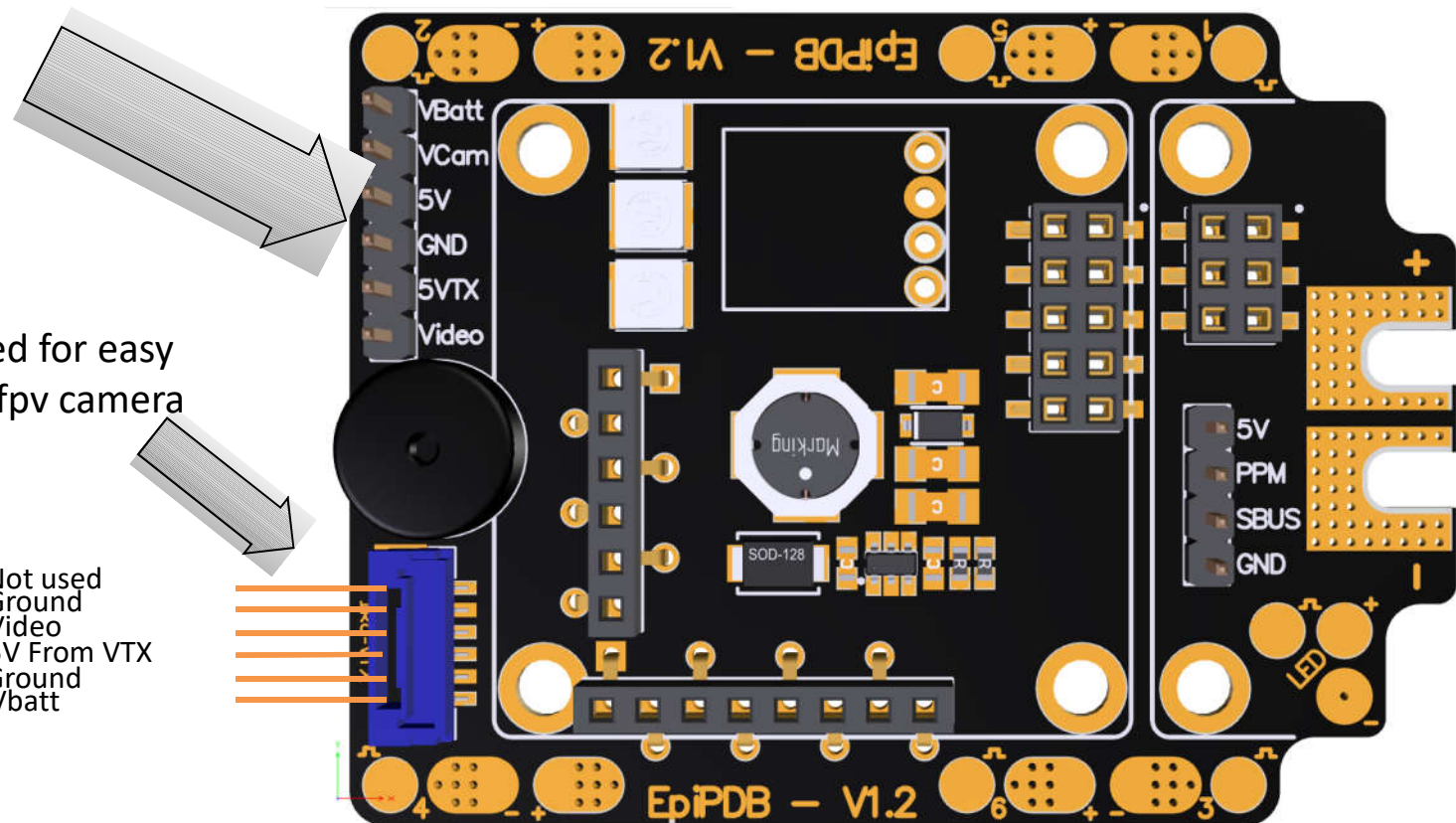


Connector info

- **Vbatt** = Battery voltage filtered.
- **VCam** = The Vcam can be used in two ways.
 1. If a Pololu is used the jumper may **never** be soldered. The jumper can be found at the bottom of the PDB.
 2. If the jumper is soldered, **Vbatt** will be used for powering the Vcam(filtered).
- **5V** = 5V 800mA filtered.
- **GND** = Ground
- **5VTX** = 5V from the Video transmitter.
- **Video** = Video signal Camera.

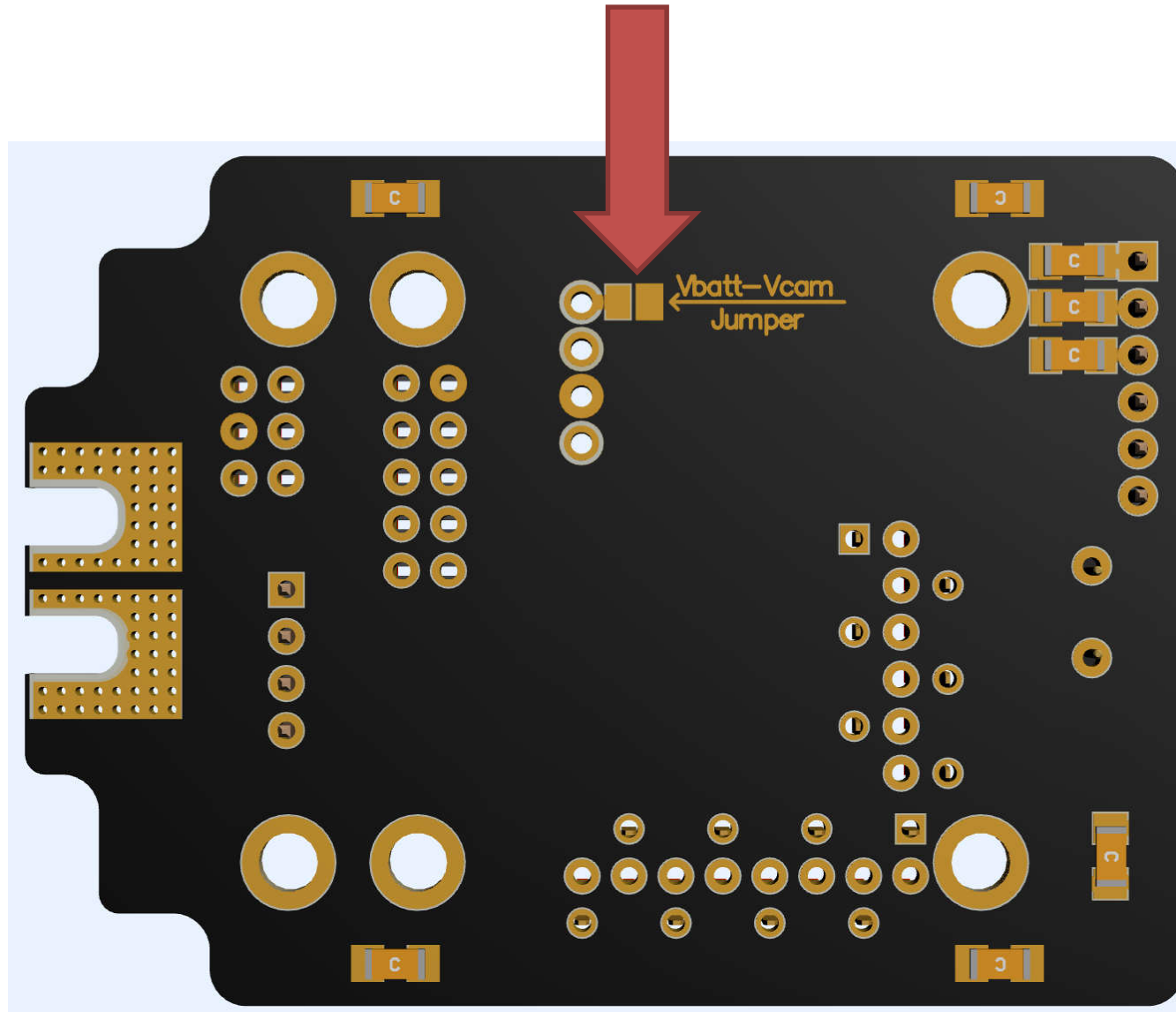
Connector can be used for easy plug and play VTX to fpv camera connection.

Not used
Ground
Video
5V From VTX
Ground
Vbatt

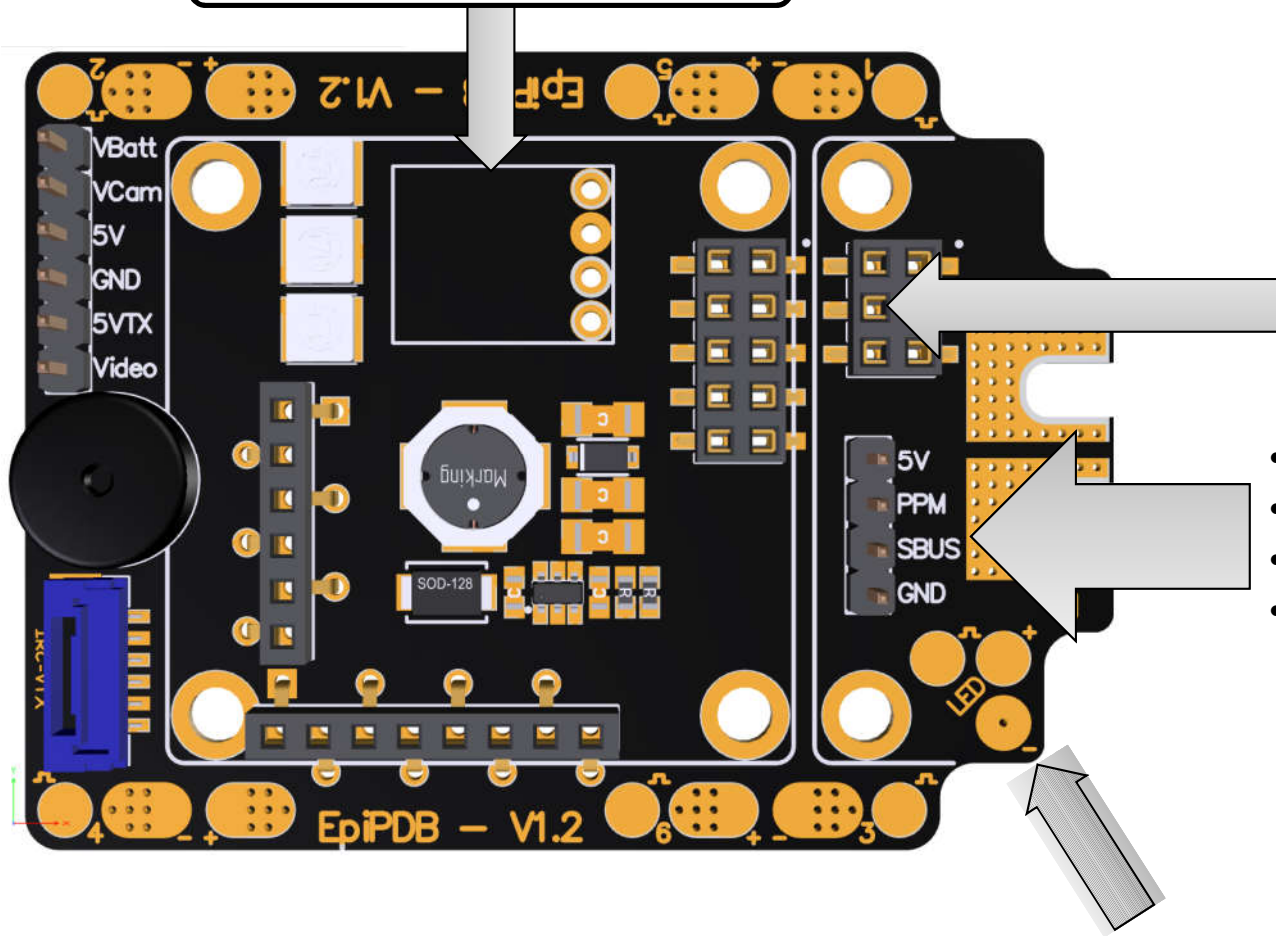


Warning

Jumper may **never** be soldered when a Pololu is installed.



Socket for a Pololu facing up



Telemetry pin

- 5V = 5V for receiver
- PPM = PPM input signal
- SBUS = SBUS input signal
- GND = Ground

Pads to be used for addressable leds

RC 6
LED/ RC 5
U2Rx/ RC 4
U2Tx/ RC 3
RC 2
PPM/ RC 1
5V
Ground

V_{batt}-V_{cam}
Jumper

