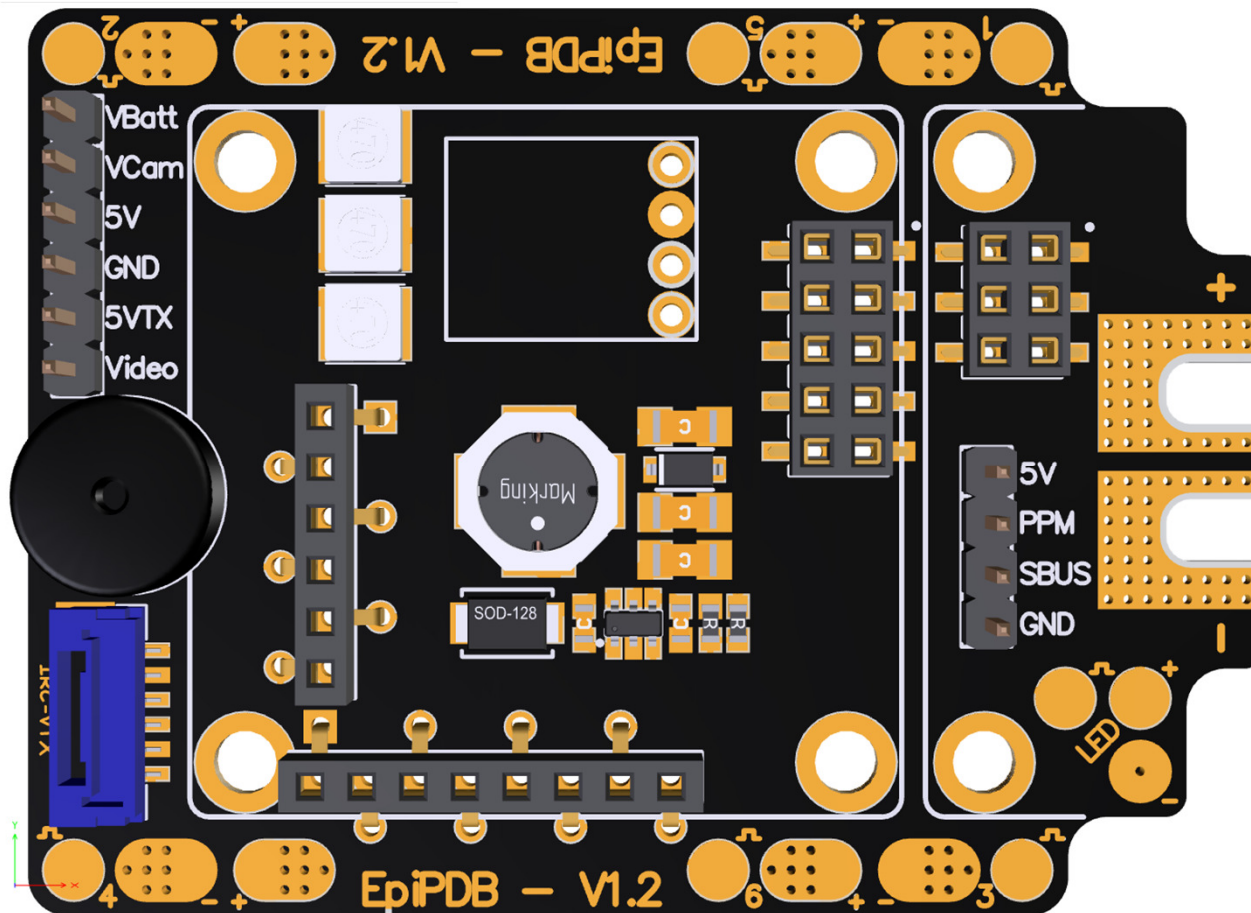
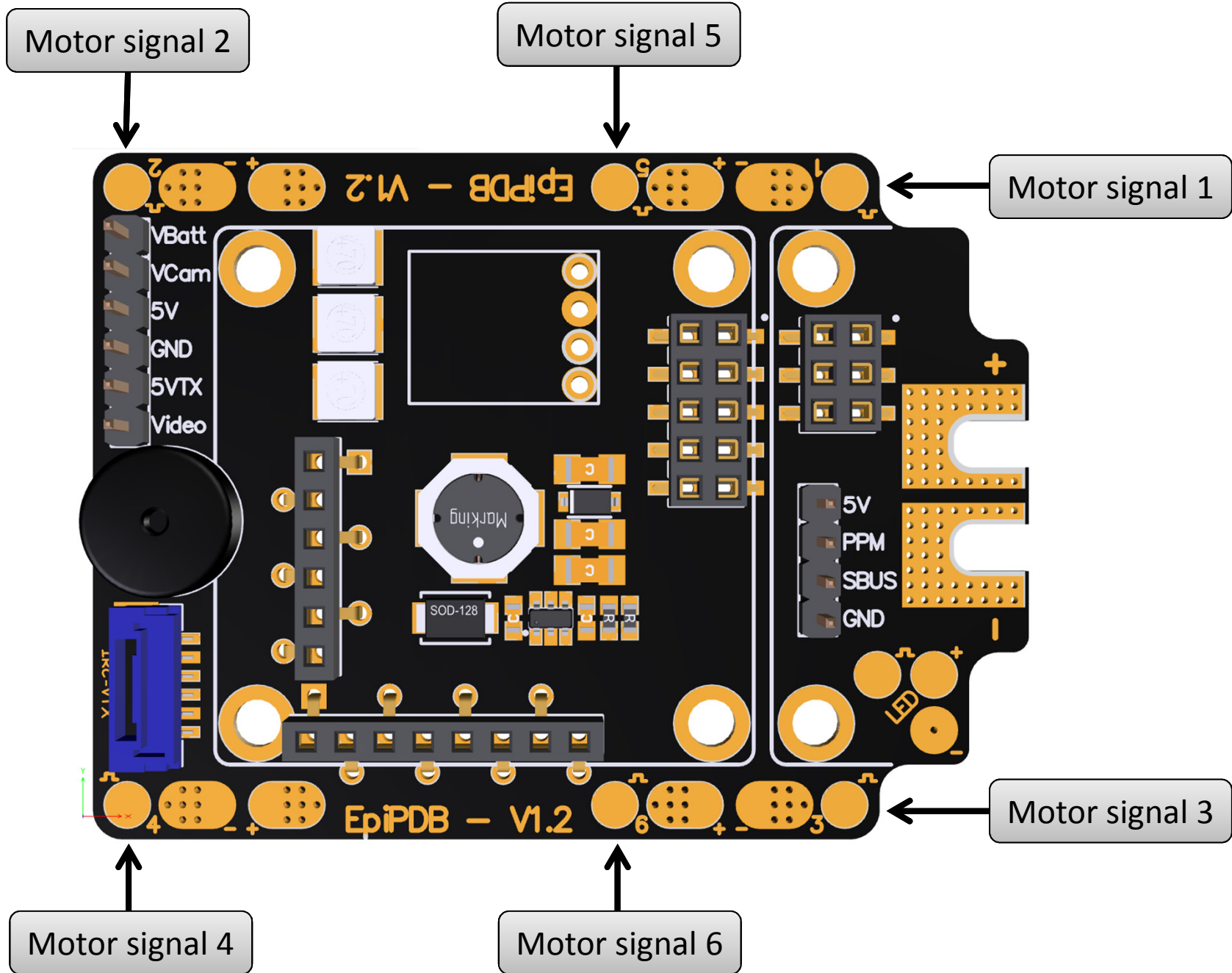


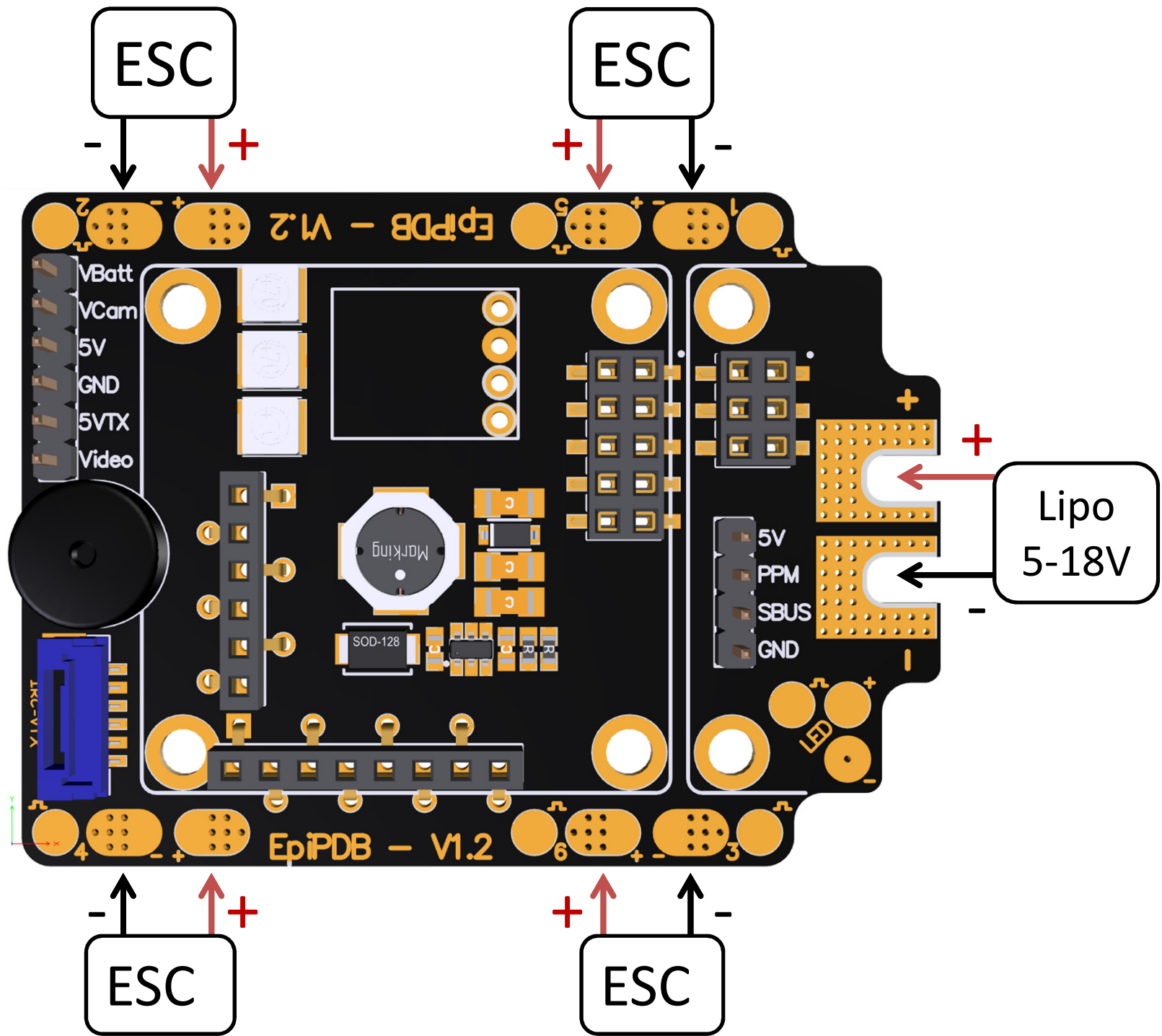
# MANUAL

## EPIQUAD PDB



\*Connector layout for Naze Rev6

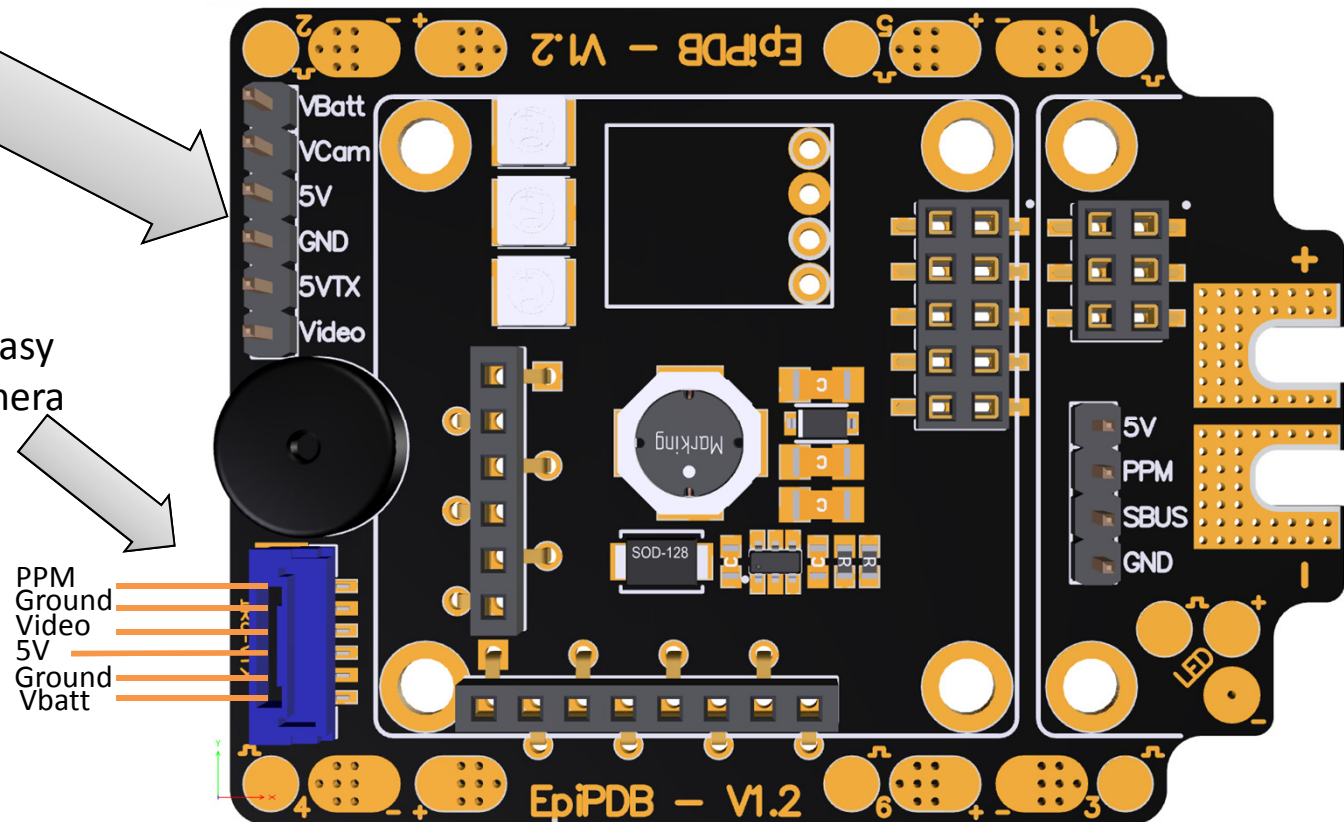




# Connector info

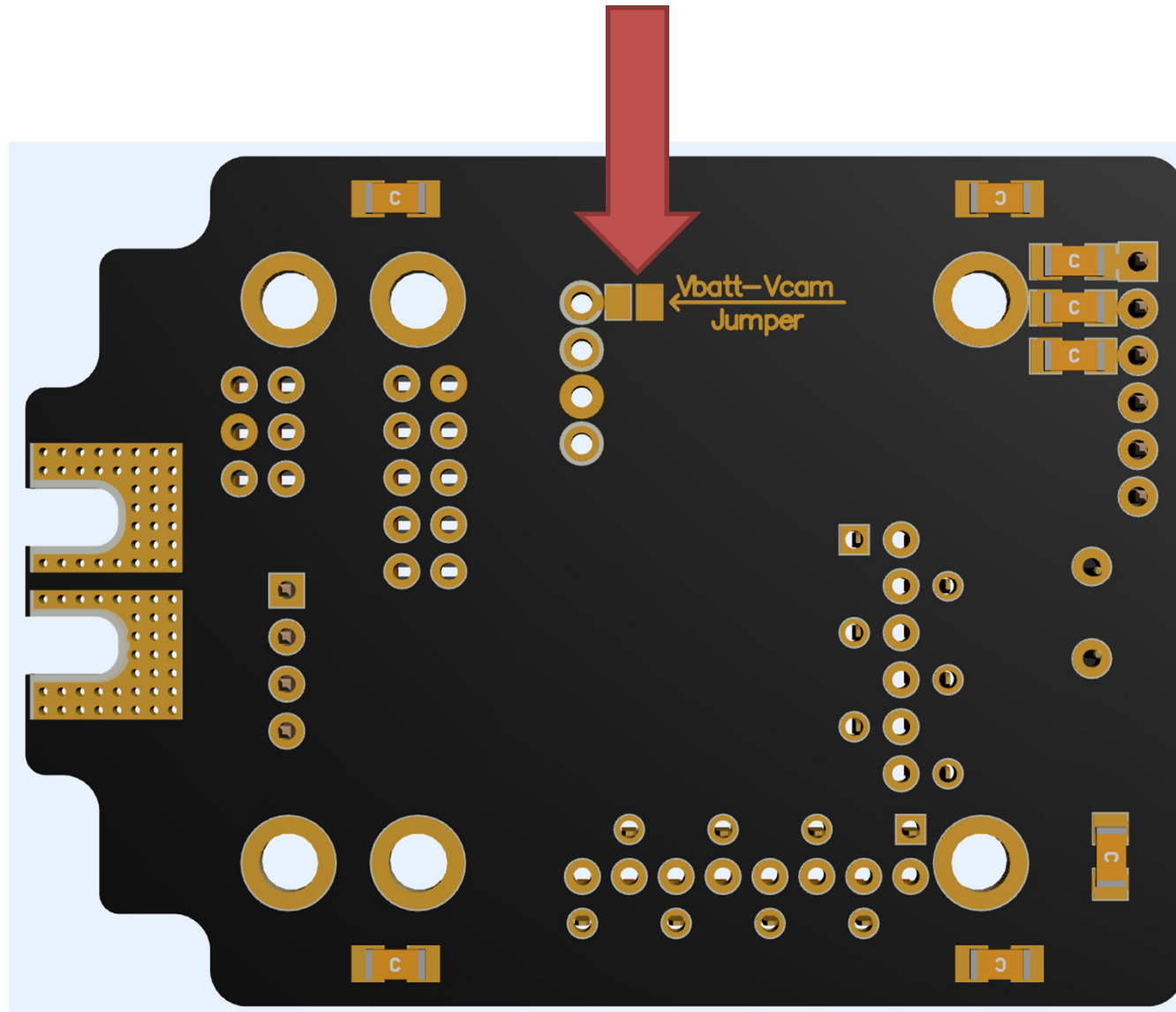
- **Vbatt** = Battery voltage filtered.
- **VCam** = The Vcam can be used in two ways.
  1. If a polulu is used the jumper may **never** be soldered. The jumper can be found at the bottom of the PDB.
  2. If the jumper is soldered, **Vbatt** will be used for powering the Vcam(filtered).
- **5V** = 5V 500mA filtered.
- **GND** = Ground
- **5VTX** = 5V from the Video transmitter.
- **Video** = Video signal Camera.

Connector can be used for easy plug and play VTX to fpv camera connection.



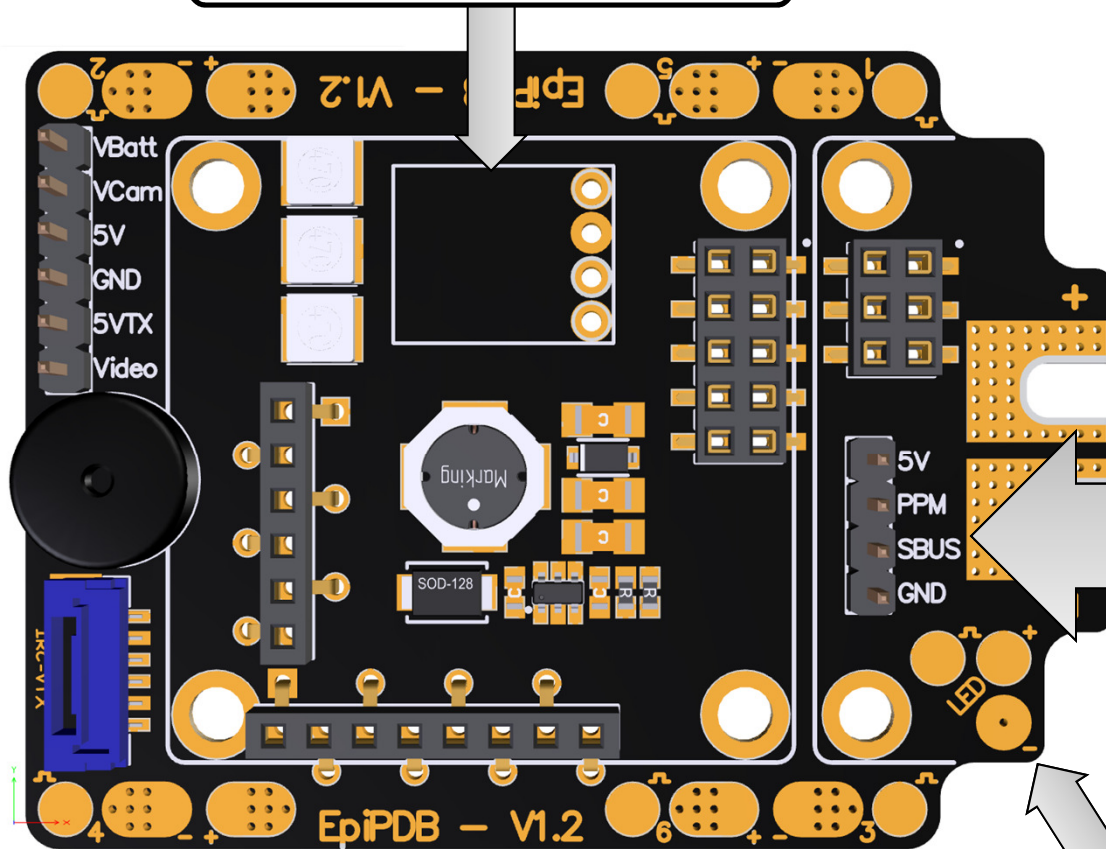
# Warning

Jumper may **never** be soldered when a polulu is installed.





Socket for a Polulu facing up



- 5V = 5V for receiver
- PPM = PPM input signal
- SBUS = SBUS input signal
- GND = Ground

Pads to be used for addressable leds